



FARMONAUT TECHNOLOGIES PVT. LTD.

CIN: U74999KA2019PTC123728

Mobile No: +91-6366026267

Email: support@farmonaut.com

Address:

No. 82-83-88, Borewell Road,
Opposite Post Office White Field,
Bangalore, Karnataka, India, 560066

farmonaut.com



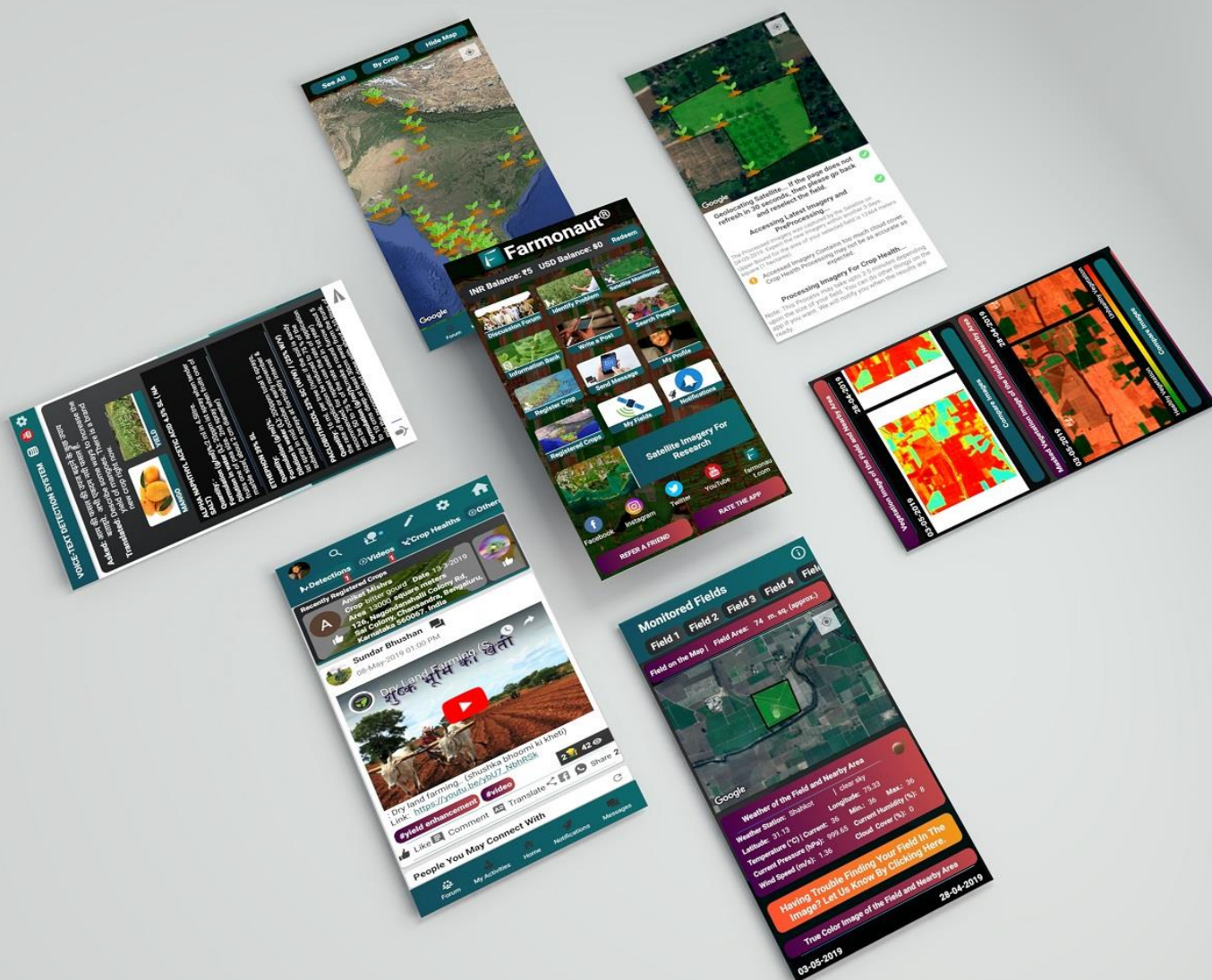
farmonaut.com



Bridging The Technological Gap Between Farmers



Address: Evoma Business Center, Office No: 310-A, #88 Borewell Road, Opposite Whitefield Post Office,
Whitefield, Bengaluru, Karnataka, Pin: 560066



Farmonaut is built upon a vision to bridge the technological gap between farmers and strives to bring state-of-the-art technologies in the hands of each and every farmer. In its current version, Farmonaut comes bundled with the following features.

Address: Evoma Business Center, Office No: 310-A, #88 Borewell Road, Opposite Whitefield Post Office, Whitefield, Bengaluru, Karnataka, Pin: 560066

FEATURES

MONITOR CROPS USING LATEST SATELLITE IMAGERY



“Why wait for crop to fail when you can detect the problems earlier.”

We currently provide three different type of services for the same:

1. Crop Health Monitoring

Farmers can select their field and identify the regions of the field at which the crop growth is not normal. Upon identifying that region of their fields, they can simply pay a visit to that part of the field and identify if the problem has already started. If it has not, the farmer can take preventive remedies by applying more fertilizers, plant growth regulators etc. If the problem has already started, they can simply explain their problem to Farmonaut’s crop issue identification system and get real-time govt. approved remedies.

For the same, our system provides two different sets of images. One set of images provide crop health status if your crop is in the early stage of growth and the second set of images provided crop health status if your crop is in the later stage of growth.

Address: Evoma Business Center, Office No: 310-A, #88 Borewell Road, Opposite Whitefield Post Office, Whitefield, Bengaluru, Karnataka, Pin: 560066

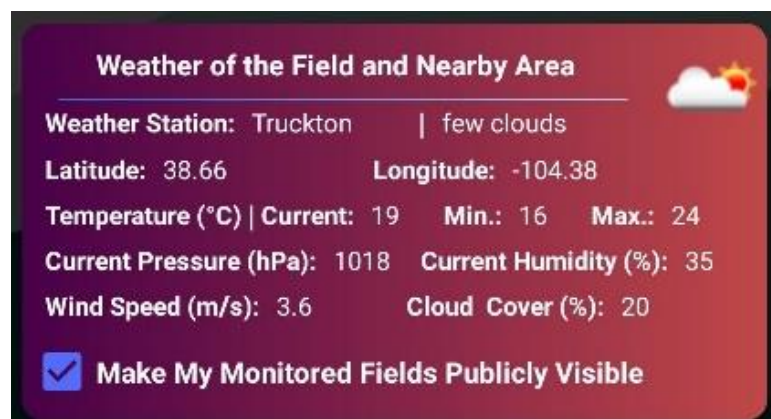
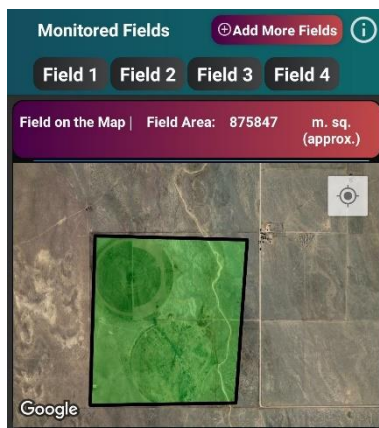
2. Vegetation Water Level Monitoring

Vegetation cover on the earth's surface undergoes severe stress during a drought. If affected areas are not identified in time, entire crops may be damaged. Hence, the early detection of water stress can prevent many of the negative impacts on crops. Vegetation Water Level Imagery provided by Farmonaut can help control irrigation, significantly improving agriculture, especially in areas where meeting the need for water is difficult.

3. Automated Crop Monitoring



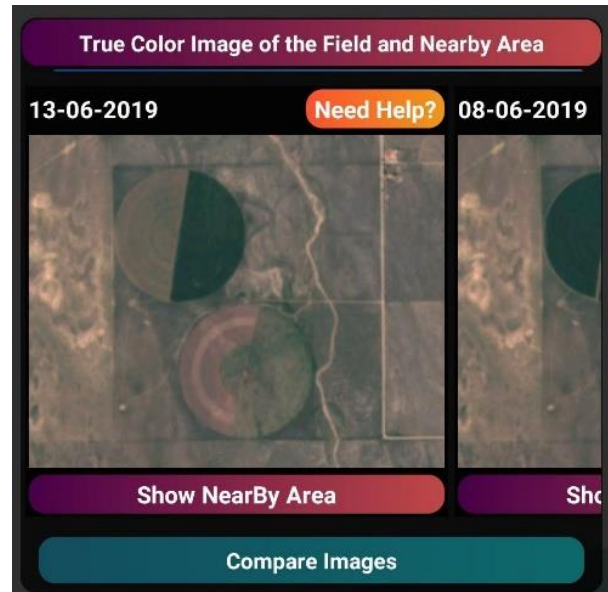
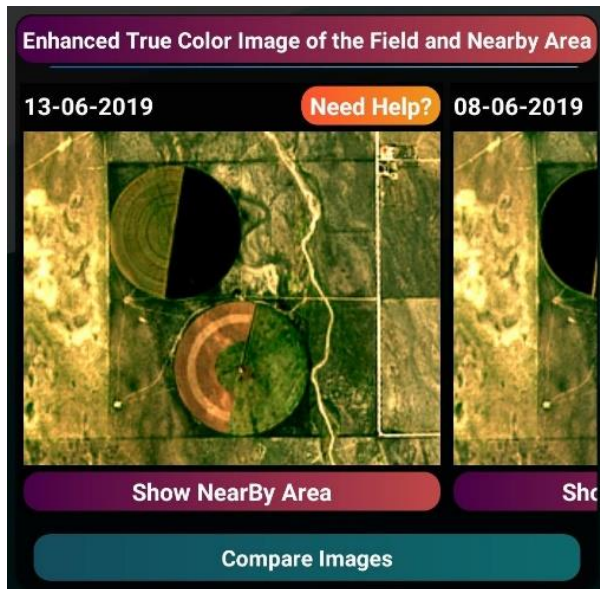
Using automated crop monitoring service, farmers will automatically receive a. crop health report and b. vegetation water level report from latest satellite imagery every 5-10 days. They will also be updated with near real-time weather report of their field from the nearest weather station. They can put multiple fields for monitoring from their profile as well. The satellite imagery is updated every 5-10 days and has a resolution of 10 meters. For this technology to be useful to farmers, we need at least 2 hectares of the land to be monitored.



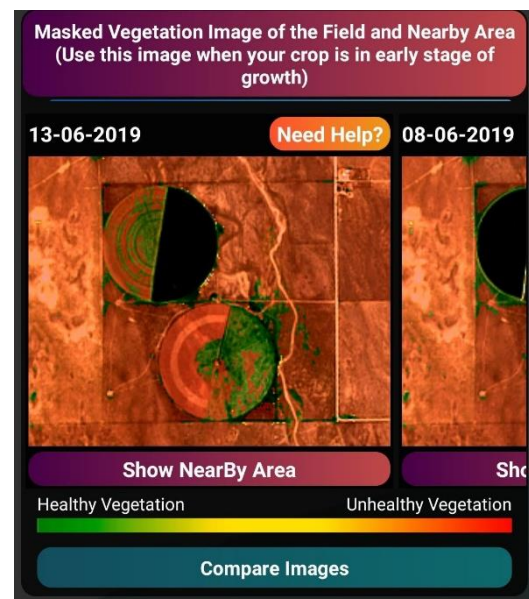
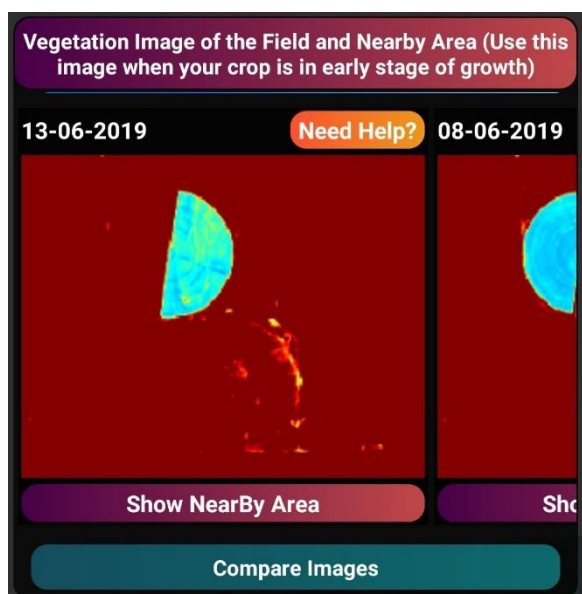
Address: Evoma Business Center, Office No: 310-A, #88 Borewell Road, Opposite Whitefield Post Office, Whitefield, Bengaluru, Karnataka, Pin: 560066

Automated Satellite Monitoring Service allows you to monitor multiple farming fields using latest satellite imagery. You will get 8 different types of satellite images of your farming field and nearby areas every 5-10 days automatically. You will also have access to latest weather information of your field from your nearest weather station for each of your monitored fields.

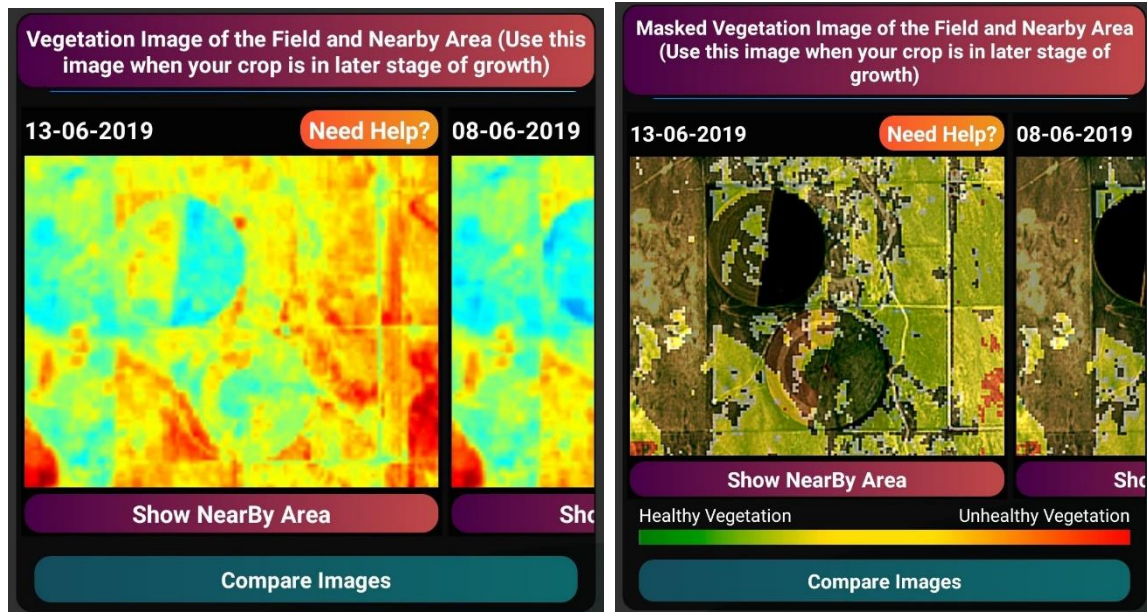
These 8 images include:



True color image is the unaltered raw satellite image retrieved for your area, whereas Enhanced True color image is the Farmonaut Processed satellite image of your area with enhanced land features. Using these two images you can see any observable land changes around your field which may be crucial for your farming practises.



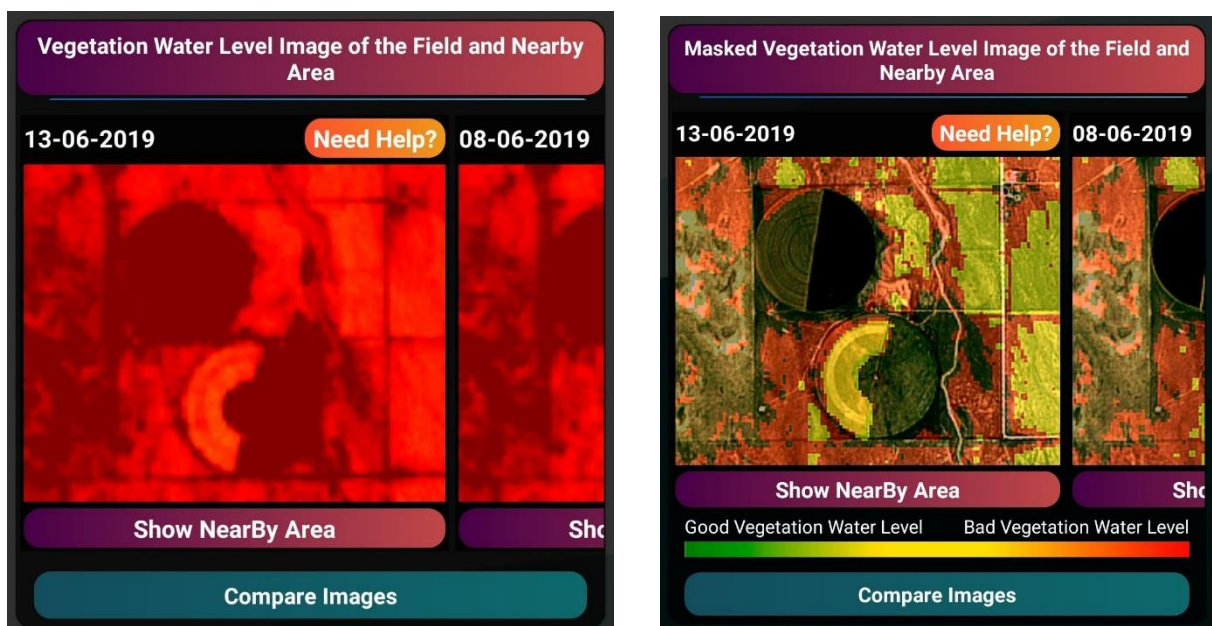
Vegetation image provides you a colormap of the vegetation of your farming field and nearby areas. The areas shown in red are the regions where the crop growth may not be normal. You will receive 4 different images for this. You should refer to the first two images when your crop is in the early stage of growth and refer to the next two images when your crop is in the later stage of growth.



Masked Vegetation image puts the layer of the vegetation image on the enhanced true color image of the area to better identify the regions where the crop growth may not be normal. These regions are shown in red on the image.

For more detailed information refer this article:

<https://farmonaut.com/blogs/remote-sensing/normalized-difference-vegetation-index-ndvi/>




Vegetation Water Level image provides you a color map of the water level of your farming field and nearby areas. The areas shown in red are the regions where the water level content may not be good. In case of a drought or less rainfall, these areas will be the most affected.

Masked Vegetation Water Level image puts the layer of the vegetation water level image on the enhanced true color image of the area to better identify the regions where the vegetation water level may not be normal. These regions are shown in red on the image.

For more information refer this article:

<https://farmonaut.com/blogs/remote-sensing/normalized-difference-water-index-ndwi/>

VOICE & TEXT BASED PLANT ISSUE IDENTIFICATION



VOICE-TEXT DETECTION SYSTEM

Asked: आम की फसल की उपज बढ़ाने के कुछ उपाय बताइये. अभी एकदम नयी फसल है.

Translated: Describe some ways to increase the yield of mangoes. There is a brand new crop right now.

MANGO **YIELD**

ALPHA NAPHTHYL ACETIC ACID 4.5% SL (NA SALT)
Quantity: -
Formulation (g/ml): 2 ml in 4.5litre.
Dilution in water (L): 20ppm 1st spray when tender fruits one of pea size. 2nd spray when fruits one of marble size(about 2 cm diameter)

ETHEPHON 39% SL
Quantity:
Formulation (g/ml):
Dilution in water (L): 200ppm total 5 sprays, 1st spray in mid october or early november & subsequent sprays at fortnightly interval

PACLOBUTRAZOL 23% SC (W/W) / (25% W/V)
Quantity: 16 ml. per tree (note: if the soil is sandy the rate of application be reduced to 75 % of the recommended. for repeat use the rate of application can be 50 to 75 % of the rate used in 1st year)

IDENTIFY DISEASES
100+ CROPS, 300+ DISEASES

MANGO
DISEASES: ANTHRACNOSE, POWDERY MILDW, BACTERIAL BLIGHT
QUANTITY: 100g
FORMULATION: 100g in 10L water
DILUTION IN WATER (L): 1000

CITRUS
DISEASES: CITRUS GREENING, CITRUS CANKER, CITRUS BLACK SPOT
QUANTITY: 100g
FORMULATION: 100g in 10L water
DILUTION IN WATER (L): 1000

GRAPE
DISEASES: GRAPEVINE DOWNY MILDW, GRAPEVINE POWDERY MILDW, GRAPEVINE BACTERIAL BLIGHT
QUANTITY: 100g
FORMULATION: 100g in 10L water
DILUTION IN WATER (L): 1000

Farmonaut can detect 100+ crops and can identify 300+ different issues in the crop just by your voice explanation of the problem. Farmonaut not only identifies the issues, but also provides solutions approved by:

Government of India, Ministry of Agriculture & Farmers Welfare, Department of Agriculture, Cooperation & Farmers Welfare, Central Insecticide Board & Registration Committee, Directorate of Plant Protection, Quarantine & Storage.

However, we suggest you to consult your local authorities first if you are not located in India. The usage guidelines may be different for different countries

50 + SUPPORTED LANGUAGES

Language is not a barrier for Farmonaut as it supports more than 50 languages. You can select different languages for speech detection and translation.

FARMONAUT DATABASE

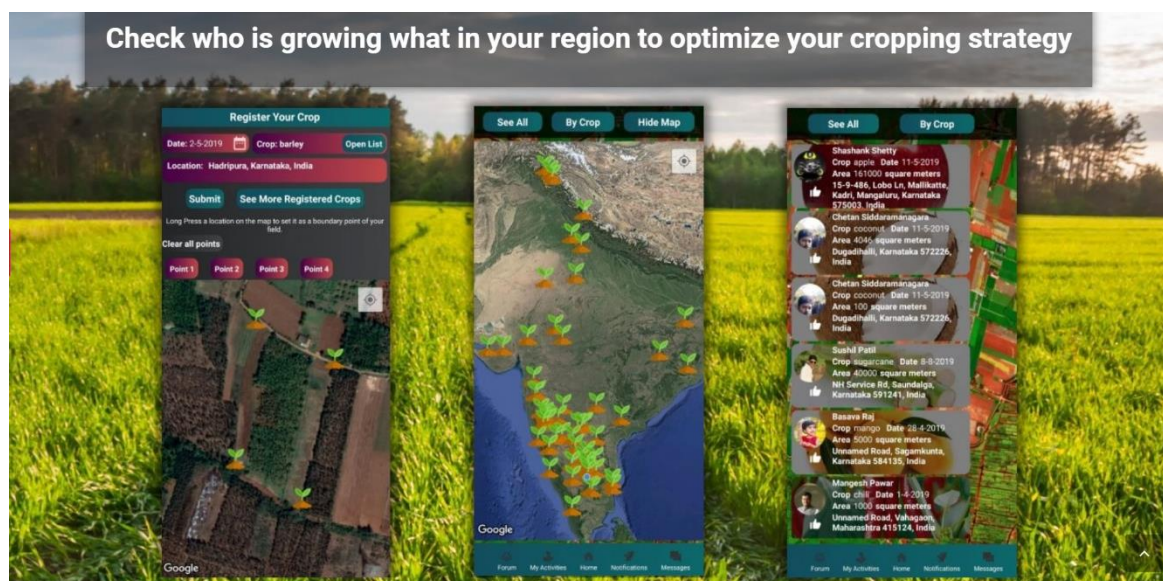
Farmonaut database is a result of rigorous research and contains details for 100+ crops, 300+ issues, and 150+ chemicals (pesticides, insecticides, plant growth regulators etc.).

FARMONAUT DISCUSSION FORUM

At times when Farmonaut detection system is unable to identify the issue, you can post your problem onto Farmonaut Discussion Forum. As the community grows, your issue will be resolved quickly! You can also share images, videos, links etc. on the discussion forum. Farmonaut brings farmers around the world close as anyone can connect with anyone with no language barrier in place.



CROP REGISTRATION SYSTEM



Every year, so many farmers are not able to sell their produce at a good price, because they do not know quantity of the same crop produced in their region. If everyone is sowing the same crop, then the surplus supply will decrease the regional price. Using the crop registration system, farmers can share what crops they are producing in their region. This data can be verified only by people in their vicinity. With this information available publicly to the community, farmers can change and modify their crop sowing strategy.

Address: Evoma Business Center, Office No: 310-A, #88 Borewell Road, Opposite Whitefield Post Office, Whitefield, Bengaluru, Karnataka, Pin: 560066